

Eighteen
Craftsman
Houses

With

Floor-Plans

Designed by

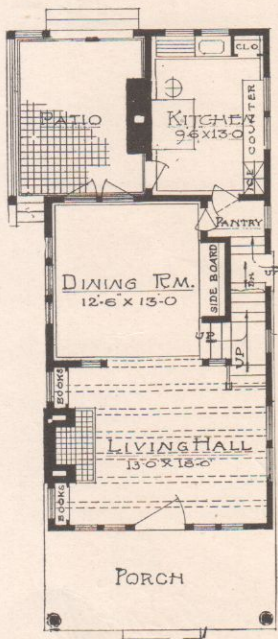
Gustav
Stickley



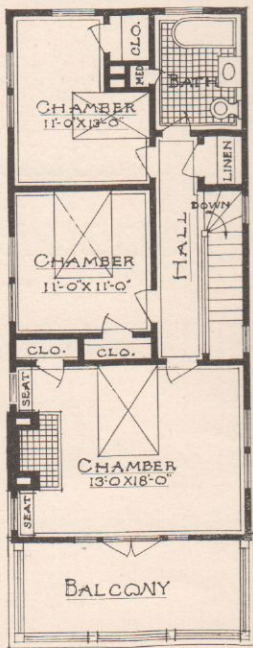
Cement and Stone House for a City Lot



Published in *The Craftsman*, May, 1909.



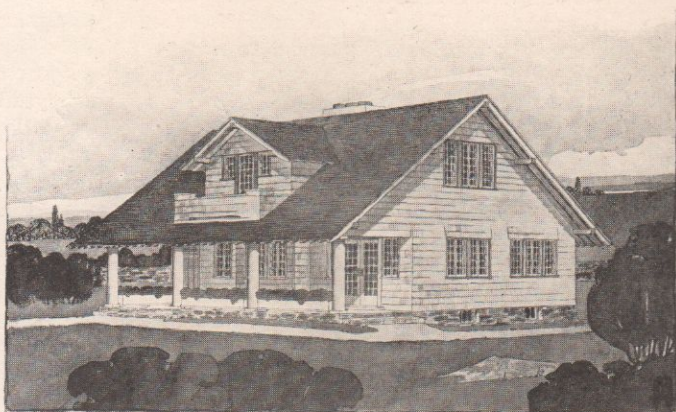
FIRST FLOOR PLAN.



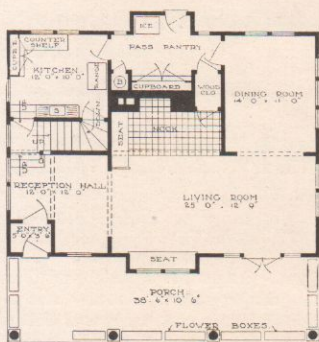
SECOND FLOOR PLAN.

ESTIMATED COST \$3,500 TO \$4,000.

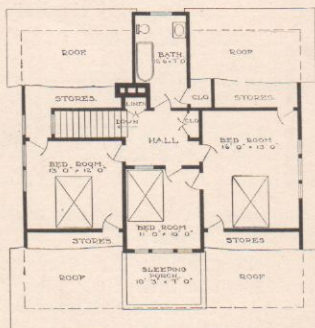
A Roomy, Homelike Farmhouse for Lovers of Plain and Wholesome Country Life



Published in *The Craftsman*, March, 1909.



FIRST STORY PLAN



SECOND STORY PLAN

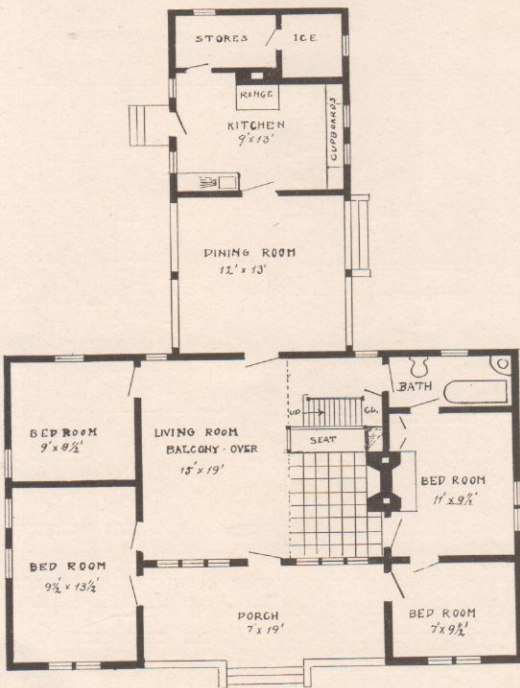
A SIMPLE DESIGN REMINISCENT OF THE OLD HOMESTEAD TYPE OF FARM HOUSE—LARGE, SUBSTANTIAL, COMFORTABLE AND INVITING. SUITABLE FOR A COUNTRY SUMMER HOME OR SUBURBAN RESIDENCE. THE WIDE, RECESSED VERANDA COULD BE USED FOR AN OUTDOOR LIVING ROOM: THE SLEEPING PORCH IS AN ESPECIALLY DESIRABLE FEATURE.

ESTIMATED COST \$4,000 TO \$4,500.

Design for Summer Camp



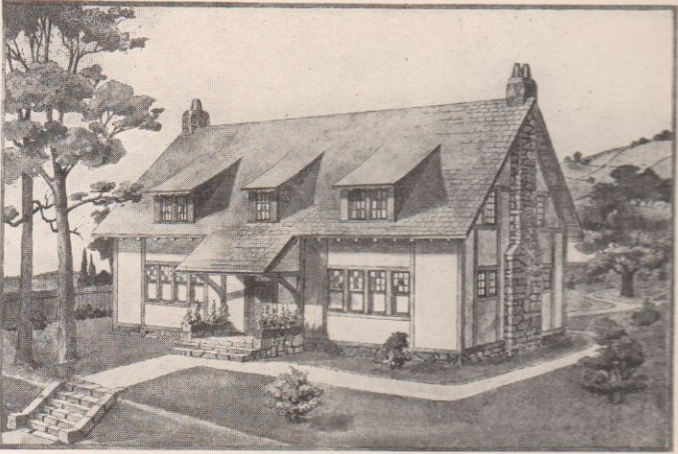
Published in *The Craftsman*, April, 1905.



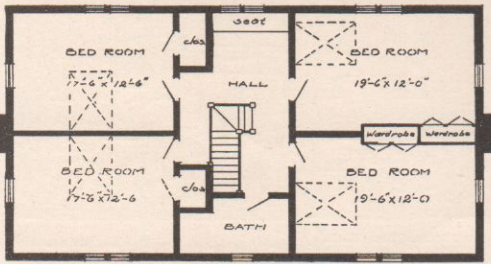
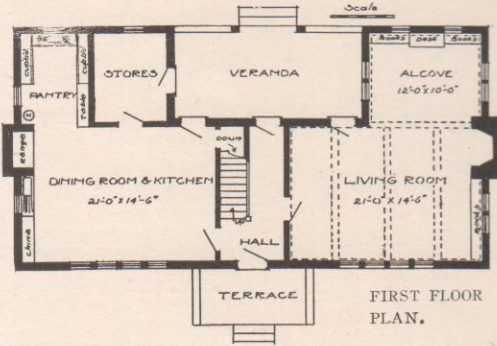
FLOOR PLAN.

ESTIMATED COST \$4,000 TO \$4,500.

An Old-fashioned House with the Dining Room and Kitchen in One

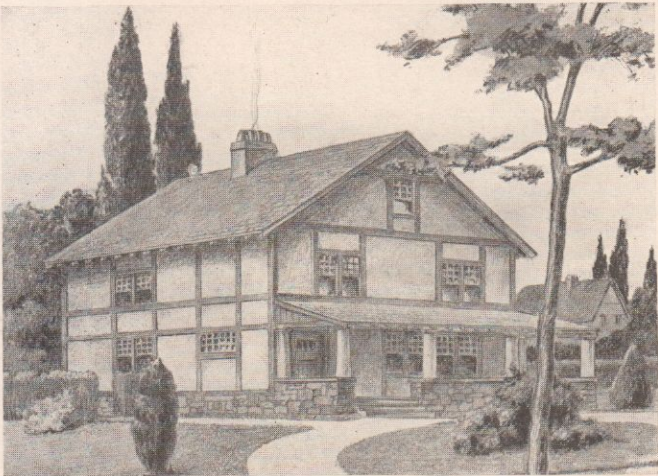


Published in *The Craftsman*, May, 1905.

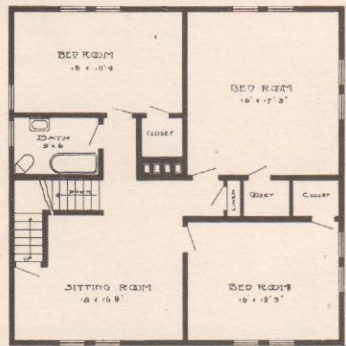
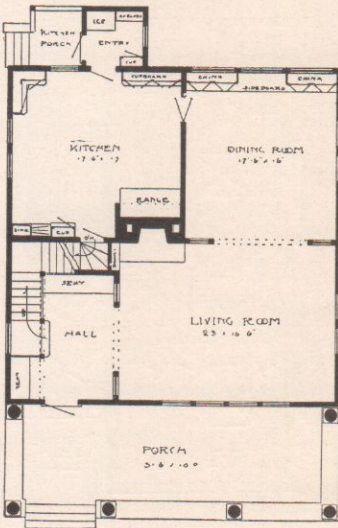


ESTIMATED COST \$4,500 TO \$5,000.

Cement House Showing Craftsman Idea for Half-timber Construction



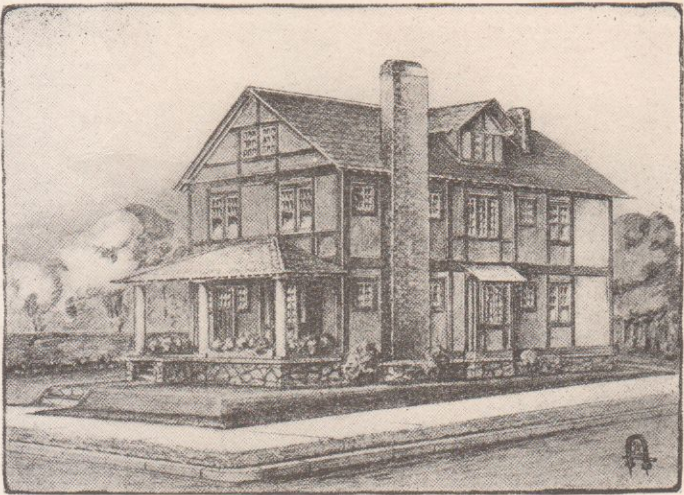
Published in *The Craftsman*, August, 1906.



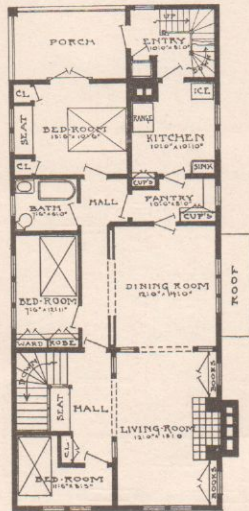
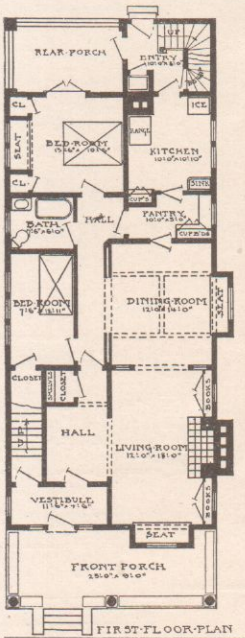
A TYPICAL CRAFTSMAN HOUSE, PERFECTLY SQUARE AND DESIGNED WITH THE UTMOST SIMPLICITY.

ESTIMATED COST \$5,000 TO \$5,500.

A Craftsman City House Designed to Accommodate Two Families



Published in *The Craftsman*, October, 1907.

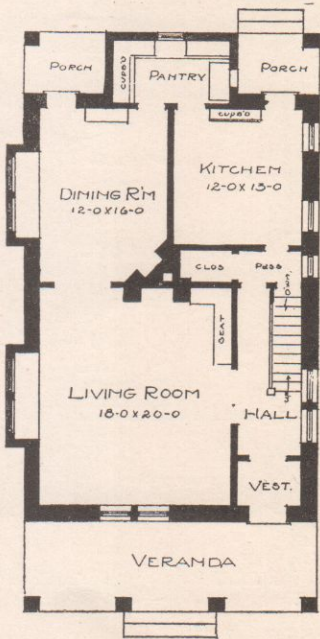


ESTIMATED COST \$5,500 TO \$6,000.

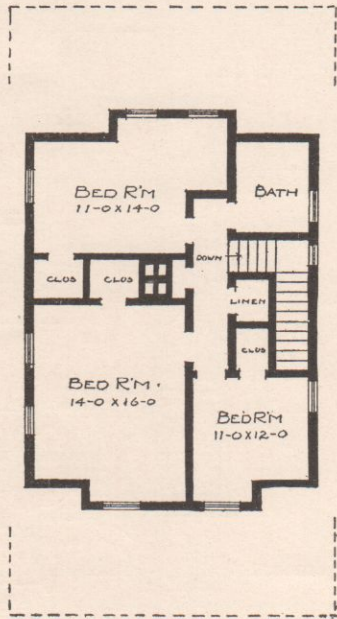
A Craftsman Cottage of Split Field Stone and Shingle



Published in *The Craftsman*, February, 1905.



FIRST FLOOR PLAN.



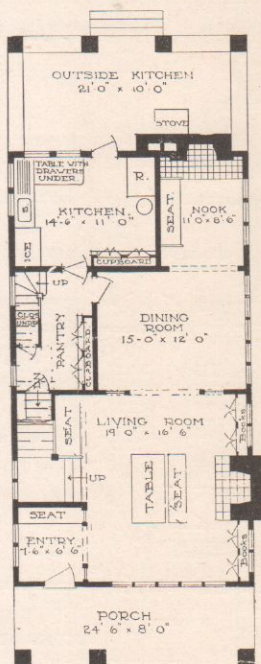
SECOND FLOOR PLAN.

ESTIMATED COST \$5,500 TO \$6,000.

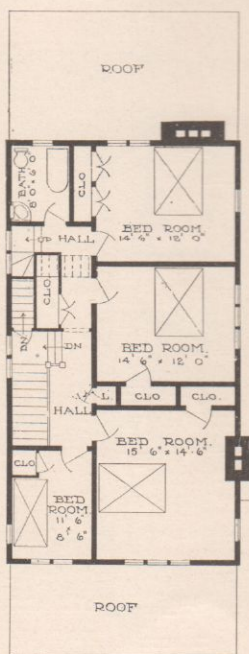
A Simple, Straightforward Design from which Many Homes Have Been Built



Published in *The Craftsman*, January, 1909.



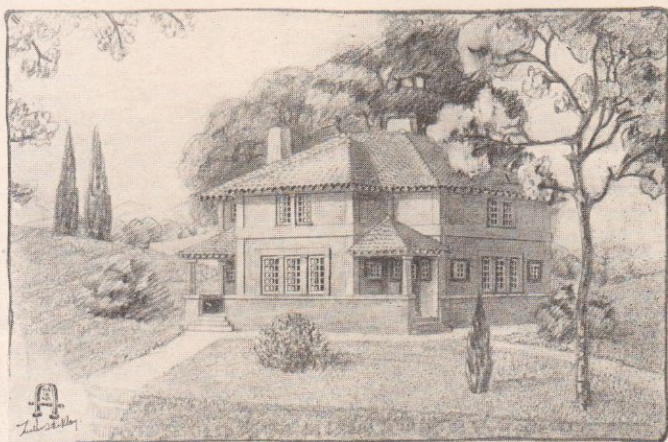
FIRST FLOOR PLAN



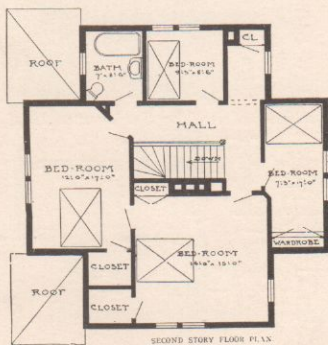
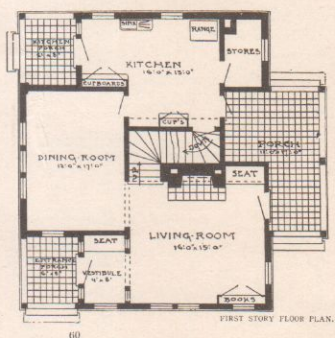
SECOND FLOOR PLAN.

ESTIMATED COST \$5,000 TO \$5,500.

A Concrete Cottage Designed in the Form of a Greek Cross to Admit More Light



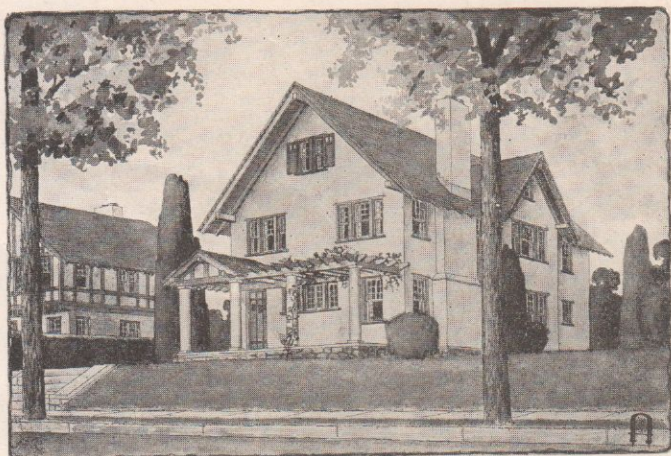
Published in *The Craftsman*, February, 1907.



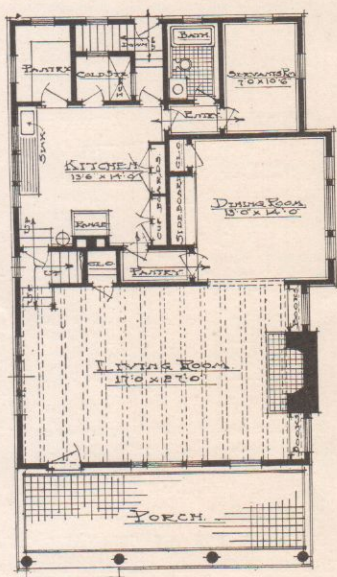
CONCRETE OR HOLLOW CEMENT BLOCK CONSTRUCTION IS SUGGESTED BY THE ILLUSTRATION, BUT THE GENERAL PLAN ADMITS OF THE USE OF BRICK OR STONE, CLAPBOARDS OR SHINGLES IF DESIRED. THE SIDE WALLS ARE HERE BROKEN INTO PANELS BY RAISED BANDS OF CONCRETE. THESE BANDS ARE SMOOTH-SURFACED, BUT THE WALLS ARE MADE VERY ROUGH SHOWING A COARSE TEXTURE THAT IS MOST INTERESTING. THE FOUNDATION IS ALSO OF CONCRETE. THE REAR PORCH IS RECESSED AND IS LARGE ENOUGH TO SERVE AS A COMFORTABLE OUTDOOR DINING ROOM.

ESTIMATED COST \$6,000 TO \$7,000.

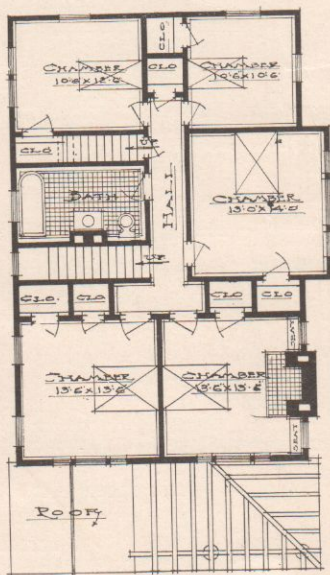
A Cement House Designed for a City Lot



Published in *The Craftsman* for May, 1909.



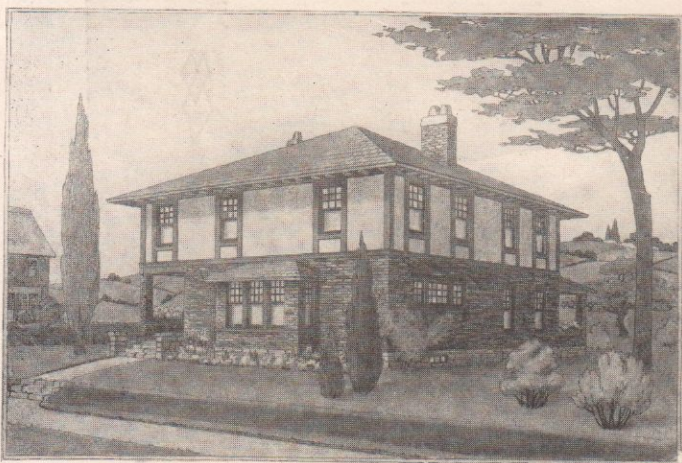
FIRST FLOOR PLAN.



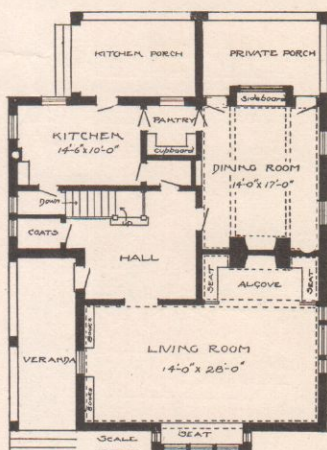
SECOND FLOOR PLAN.

ESTIMATED COST \$6,000 TO \$6,500.

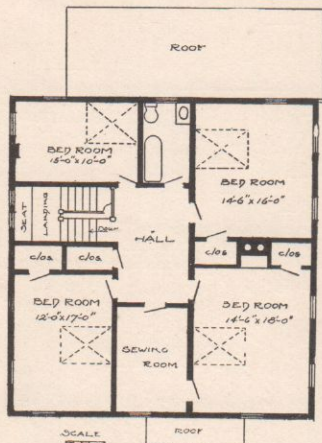
A Plain House that Will Last for Generations and Need but Few Repairs



Published in *The Craftsman*, July, 1905.



FIRST FLOOR PLAN.



SECOND FLOOR PLAN.

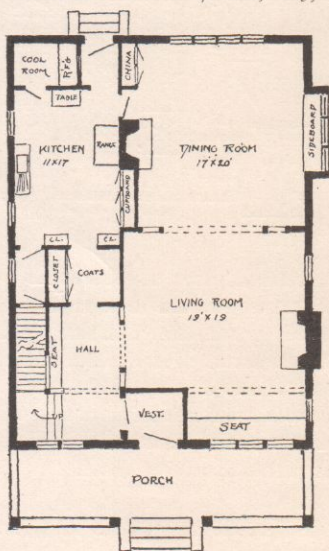
DESIGN SUITABLE FOR AN ORDINARY CITY LOT LARGE ENOUGH TO ACCOMMODATE A HOUSE 30 FEET SQUARE.

ESTIMATED COST \$6,000 TO \$6,500.

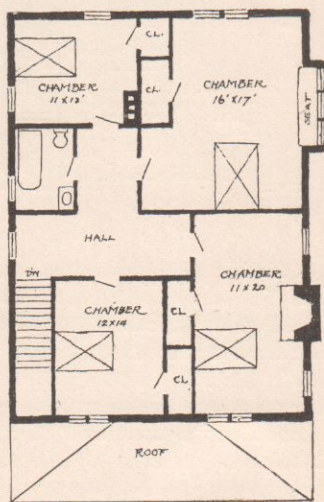
House of Brick and Plaster Construction



Published in *The Craftsman*, May, 1907.



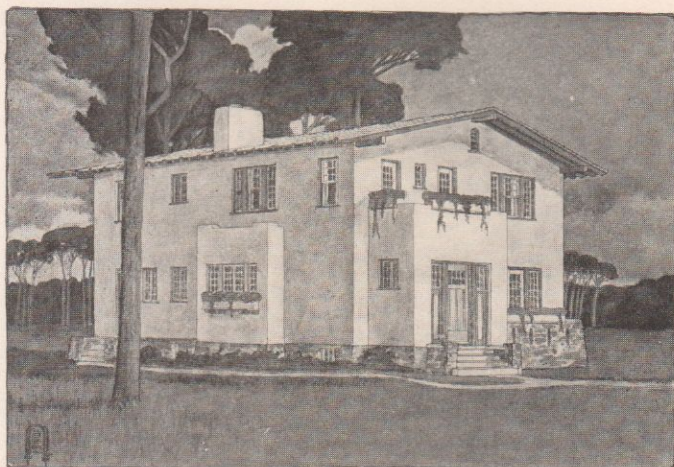
FIRST FLOOR PLAN.



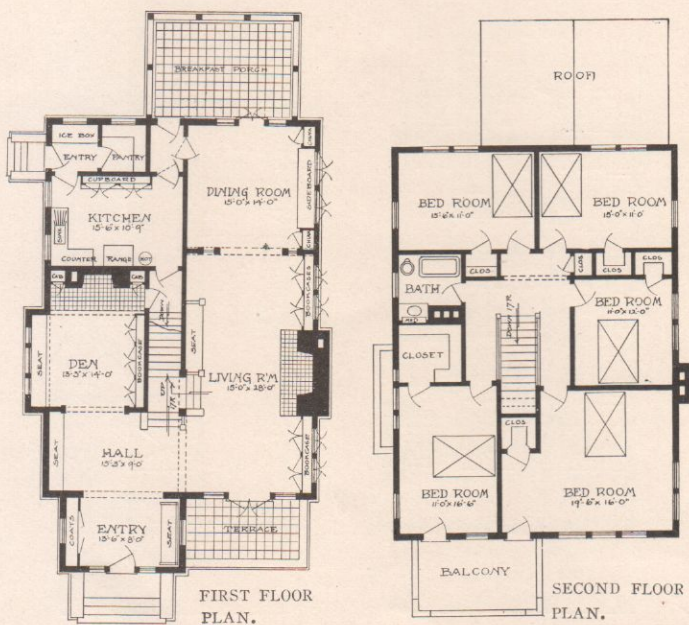
SECOND FLOOR PLAN.

ESTIMATED COST, \$6,000 TO \$6,500.

A Craftsman Design for a Suburban House of Concrete Construction

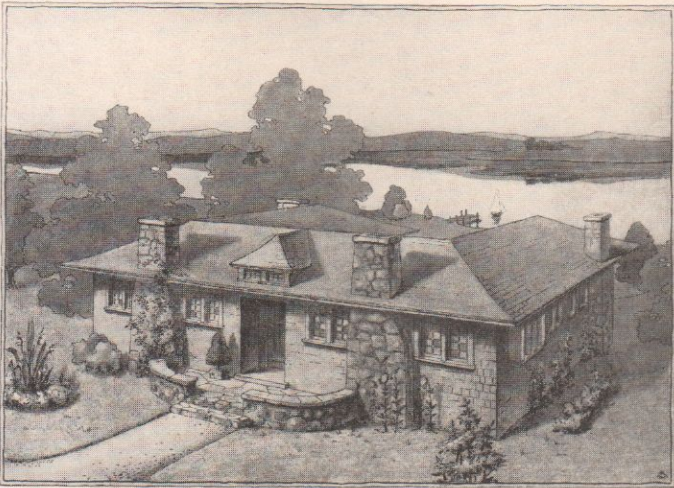


Published in *The Craftsman*, April, 1909.

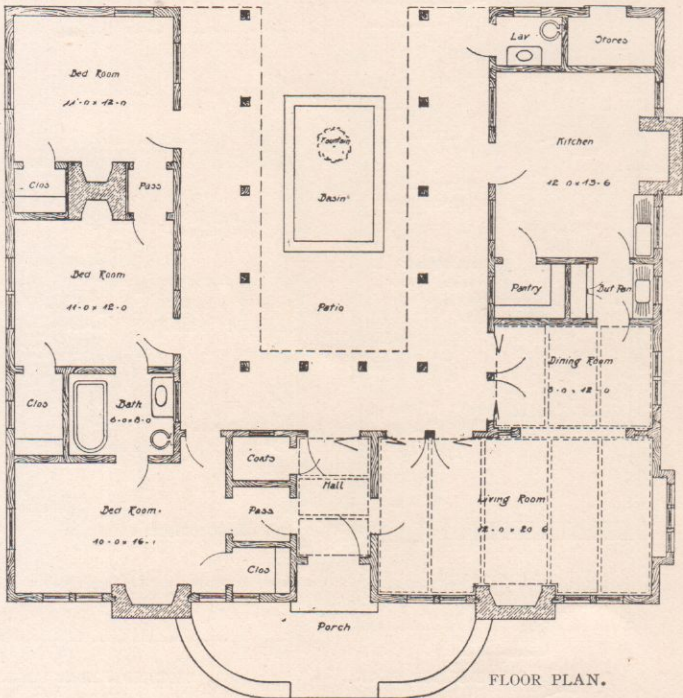


ESTIMATED COST \$6,500 TO \$7,000.

A Bungalow Built around a Courtyard



Published in *The Craftsman*, July, 1904.



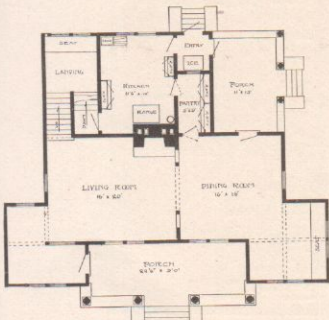
ESTIMATED COST \$6,500 TO \$7,000.

Tower Construction Effectively Used

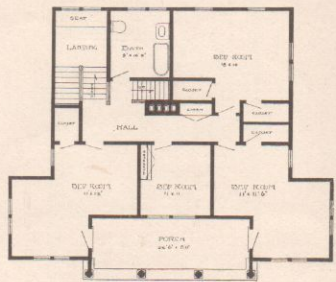


W. H. H. H. H.

Published in *The Craftsman*, September, 1900.



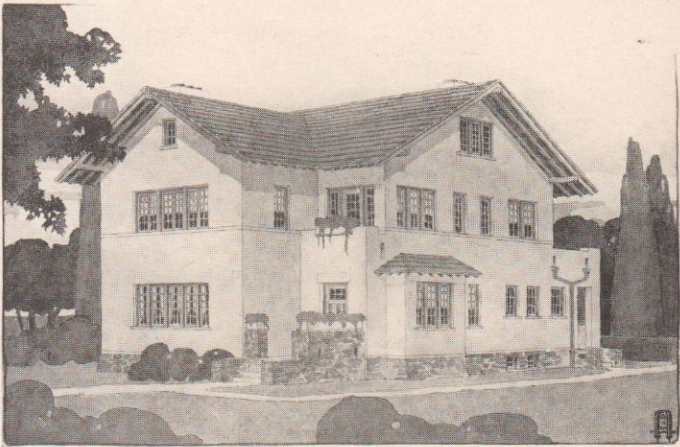
FIRST FLOOR PLAN.



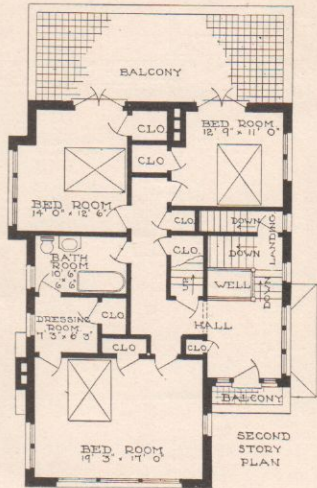
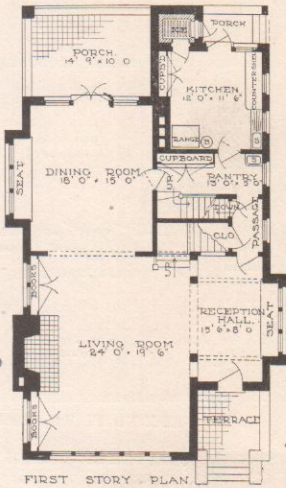
SECOND FLOOR PLAN.

ESTIMATED COST \$7,000 TO \$7,500.

A Craftsman Cement House for Town or Country



Published in *The Craftsman*, February, 1909.

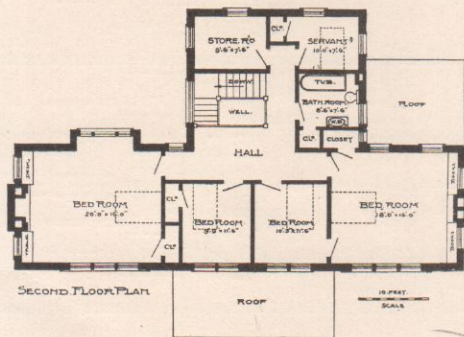
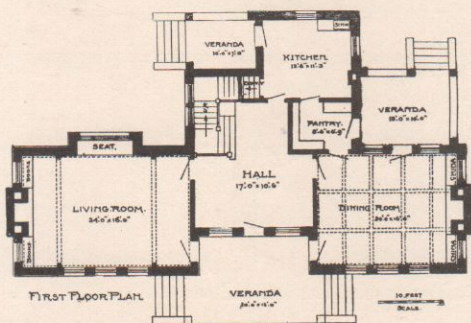


ESTIMATED COST \$7,500 TO \$8,000.

House Designed for Wide, Shallow Lot

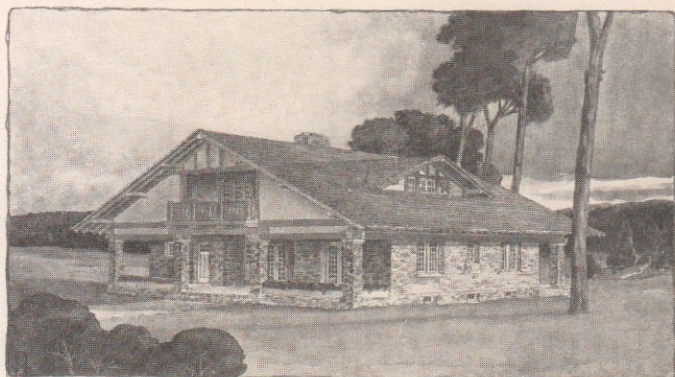


Published in *The Craftsman*, September, 1905.

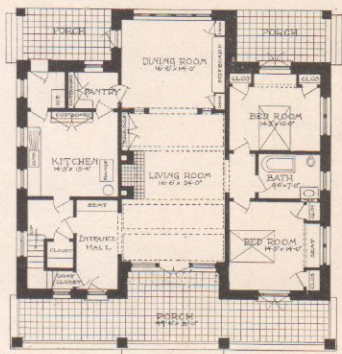


ESTIMATED COST \$6,500 TO \$7,000.

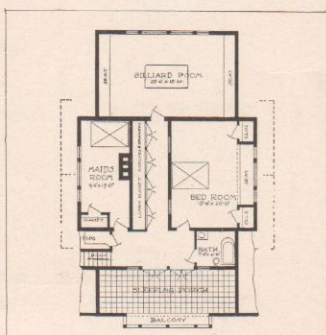
A Craftsman Bungalow of Stone and Cement for Country or Suburbs



Published in *The Craftsman*, April, 1909



FIRST FLOOR PLAN.



SECOND FLOOR PLAN.

ONE OF THE MOST CRAFTSMANLIKE OF ALL OUR DESIGNS. STONE IS SUGGESTED IF NOT TOO EXPENSIVE. OTHERWISE, THE HOUSE COULD BE BUILT OF CONCRETE, OF CLAPBOARDS OR OF SHINGLES. THE ILLUSTRATION SUGGESTS THE EFFECTIVE USE OF SPLIT FIELD STONE WITH PLASTER AND HALF-TIMBER CONSTRUCTION FOR GABLES. THE SLEEPING PORCH IS A MOST INTERESTING FEATURE.

ESTIMATED COST \$8,000 TO \$9,000.

CRAFTSMAN HOUSE PLANS

GUSTAV STICKLEY, editor and publisher of THE CRAFTSMAN, has devoted particular attention to designing a class of houses expressly suited to the great mass of the American people. One or more of these plans have appeared in THE CRAFTSMAN Magazine each month for some years past, and Mr. Stickley has now published a book called "Craftsman Homes" into which he has collected plans of about 50 houses including Country, Suburban and Town Houses, Bungalows, Cottages and Cabins ranging in cost from \$500 to \$15,000. Perspective drawings and complete floor plans of 18 of these houses are shown in this folder.

TO PROMOTE THE BUILDING of a better class of houses, an arrangement has been made by which persons interested in the development of suburban and other real estate, builders and others are enabled to place at the disposal of home-builders, plans of Craftsman Houses especially adapted to their requirements.

Address all inquiries and requests for information to

The Suburban Improvement League

41 WEST 34th STREET

NEW YORK CITY

"CRAFTSMAN HOMES"

By Gustav Stickley

Persons interested in building should obtain copies of "Craftsman Homes."

CONTENTS: The Craftsman Creed, Craftsman Houses and Plans, Halls and Stairways, Living Rooms, Dining Rooms, Porches and Terraces, The Effective Use of Cobblestones, Gates and Gateways, Gardens, Exterior Features and Materials, Wall Spaces and Color Schemes, Interior Woodwork and Structural Features, Choice of Woods, Floors and How to Finish Them, Treatment of Interior Woodwork, Decoration and Finishing, Home Cabinet-Making and Metal Work.

SPECIFICATIONS: 240 pages, 8½ x 11 inches. Fine India tint plate paper. Duo-tone Sepia ink. Over 200 half-tone engravings of Interiors and Exteriors, 4 full page Color Plates and Portrait Sketch.

STYLES AND PRICES: Full Linen Crash \$2.00; Craftsman Hard Leather, (Flexible) \$3.00; De Luxe, First Edition, Hand-sewed and Forwarded, \$5.00. All Booksellers or sent postpaid on receipt of price, subject to return if not wanted.

THE CRAFTSMAN, 41 West 34th Street, New York City